

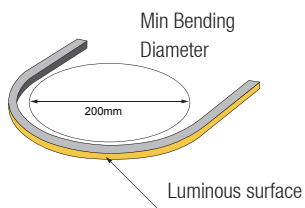
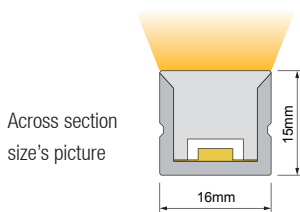
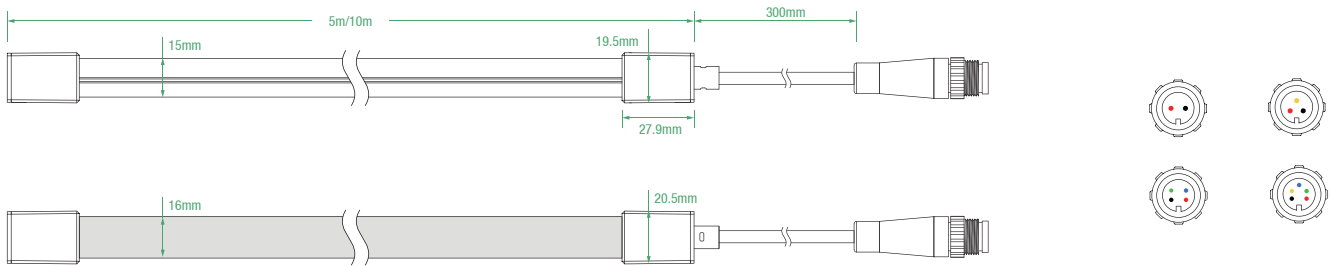
SILICONE LED NEON LIGHT





Silicone Ledline Flex Top1615 IP67, DC24V, has bending direction vertically and Front / Side / Bottom Cable Entry, with radius of 100mm (5.9") and across section size: 16mm*15mm/0.63"*0.59"(W*H). It is IP67 protection, never yellow, UV resistant, saltwater resistant and high temperature resistant via opal silicone coating. Uniform luminance and dot free will bring the most excellent performance for indoor & outdoor application. The product has constant voltage and constant current version. Constant current version can connect 27 meters in series with one power supply and don't have voltage drop, and can save the installation cost better. Unique end cap design, can install quickly and easily to meet the different length's request, No welding and dealing with waterproof.

Dimension structure



Electrical Parameter

Voltage	DC24V
LED PIN Temperature	Max. 65 °C
Working Temperature	-25 °C ~ 60 °C
Ambient Temperature	Min. -25 °C, Max (Table below)
CRI	Ra80/Ra90 Optional

Specification

Power	5w/m	10w/m	15w/m
Efficacy@4000K	58.8 lm/W	57.3lm/W	53.8 lm/W
Max Ambient Temperature	55 °C	45 °C	35 °C

Due to the tolerance of the production and electrical components, output value and electrical power can vary up to 10%

TYRIA LIGHTING

Silicone LED Neon Light
TOP 1615



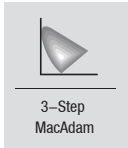
Horizontal Bending



Vertical Bending



Only One Bin



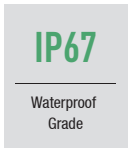
3-Step MacAdam



UV Protection



Resistant to solvents



IP67

Waterproof Grade



LM80

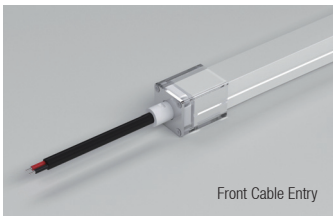
LM80 Standard



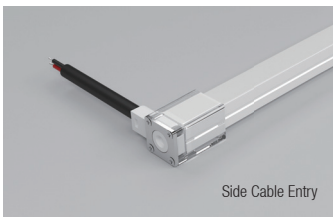
Resistant Saltwater

Various Connections

Use three kinds of entry cable, to meet the different installing request



Front Cable Entry



Side Cable Entry



Bottom Cable Entry

Finished CCT (K)	Unit cut (mm)	CRI	Power (W)	Lumen (LM/m)	Efficacy (LM/w)	Max.run length(m)	CV/CC
● 2100 ±100	50	>90	5	240.3	48.1	27	CC/CV
			10	459.9	46.0	17	
			15	627.5	41.8	14	
● 2400 ±100	50	>90	5	242	48.4	27	CC/CV
			10	468.1	46.8	17	
			15	659.7	44.0	14	
● 2700 ±100	50	>90	5	285.8	57.2	27	CC/CV
			10	552.7	55.3	17	
			15	771.5	51.4	14	
● 3000 ±100	50	>90	5	286.3	57.3	27	CC/CV
			10	539.3	53.9	17	
			15	766.9	51.1	14	
● 3500 +200 -100	50	>90	5	300.7	60.1	27	CC/CV
			10	583.9	58.4	17	
			15	815.8	54.4	14	
● 4000 +300 -200	50	>90	5	294.1	58.8	27	CC/CV
			10	573.4	57.3	17	
			15	807	53.8	14	
● 5000 +300 -200	50	>90	5	297.8	59.6	27	CC/CV
			10	570.3	57.0	17	
			15	793.9	52.9	14	
● 6000 +300 -100	50	>90	5	293.9	58.8	27	CC/CV
			10	572.9	57.3	17	
			15	782.6	52.2	14	
● TW	50	>90	2.5	133	53.2	5	CV
			2.5	143.9	57.6	5	
			5	279.5	55.9	5	
● TW	50	>90	5	274	54.8	5	CV
			5	295.1	59.0	5	
			10	569.6	57.0	5	
● TW	50	>90	7.5	363.7	48.5	5	CV
			7.5	387.2	51.6	5	
			15	766.2	51.1	5	
● R	62.5	--	5	111.6	22.3	35	CC/CV
			10	237.5	23.8	23	
			15	323.2	21.5	18	
● G	62.5	--	5	308	61.6	27	CC/CV
			10	548.2	54.8	17	
			15	697.4	46.5	14	
● B	62.5	--	5	57	11.4	27	CC/CV
			10	106.9	10.7	17	
			15	148.6	9.9	14	
● Amber	62.5	--	5	25.6	5.1	35	CC/CV
			10	44.4	4.4	23	
			15	61	4.1	18	
● Pink	62.5	--	5	116.7	23.3	27	CC/CV
			10	224.5	22.5	17	
			15	302.2	20.1	14	

- TW: Tunable white, CRI80
- Max series length refers to single side feed
- The above color temperature is the finished-product color temperature.
- The given data are typical values due to the tolerance of the production and electrical components, output value and electrical power can vary up to 10%
- Please don't walk on it without protection.

Power (W)	Finished CCT (K)	Lumen (LM/m)	Efficacy (LM/w)	Unit cut (mm)	Max.run length(m)	CV/CC
5	R	28.6	16.8	62.5	5	CV
	G	97.7	57.5			
	B	18.3	10.8			
	RGB	147.8	29.6			
10	R	56	17.0	62.5	5	CV
	G	180.8	54.8			
	B	34	10.3			
	RGB	267.8	26.8			
15	R	79.3	15.9	62.5	5	CV
	G	201.5	201.5			
	B	39.9	8.0			
	RGB	323.5	21.6			
5	R	11	8.9	62.5	5	CV
	G	44	35.3			
	B	11	8.6			
	W (5000-5600K)	46	36.8			
	RGBW	111	22.1			
10	R	20	8.0	62.5	5	CV
	G	86	34.3			
	B	20	8.2			
	W (5000-5600K)	92	36.7			
	RGBW	211	21.1			
15	R	36	9.6	62.5	5	CV
	G	98	26.2			
	B	29	7.7			
	W (5000-5600K)	126	33.5			
	RGBW	302	20.1			
5	R	13	10.4	62.5	5	CV
	G	43	34.4			
	B	10	8.0			
	W (3400-4000K)	51	40.8			
	RGBW	109	21.8			
10	R	21	8.4	62.5	5	CV
	G	81	32.4			
	B	22	8.8			
	W (3400-4000K)	102	40.8			
	RGBW	219	21.9			
15	R	32	8.5	62.5	5	CV
	G	102	27.2			
	B	28	7.5			
	W (3400-4000K)	132	35.2			
	RGBW	305	20.3			

- TW: Tunable white, CRI80
- Max series length refers to single side feed
- The above color temperature is the finished-product color temperature.
- The given data are typical values due to the tolerance of the production and electrical components, output value and electrical power can vary up to 10%
- Please don't walk on it without protection.

Power (W)	Finished CCT (K)	Lumen (LM/m)	Efficacy (LM/w)	Unit cut (mm)	Max.run length(m)	CV/CC
5	 R	11	8.8	62.5	5	CV
	 G	45	36.0			
	 B	12	9.6			
	 W (2400-3000K)	47	37.6			
	 RGBW	110	22.0			
10	 R	20	8.0	62.5	5	CV
	 G	83	33.2			
	 B	20	8.0			
	 W (2400-3000K)	94	37.6			
	 RGBW	211	21.1			
15	 R	35	9.3	62.5	5	CV
	 G	103	27.5			
	 B	29	7.7			
	 W (2400-3000K)	124	33.1			
	 RGBW	303	20.2			
5	 R	12	9.6	62.5	5	CV
	 G	42	33.6			
	 B	11	8.8			
	 W (2400-3000K)	44	35.2			
	 RGBW	105	21.0			
10	 R	21	8.4	62.5	5	CV
	 G	79	31.6			
	 B	20	8.0			
	 W (2400-3000K)	86	34.4			
	 RGBW	198	19.8			
15	 R	35	9.3	62.5	5	CV
	 G	95	25.3			
	 B	27	7.2			
	 W (2400-3000K)	114	30.4			
	 RGBW	278	18.5			

Mounting Way



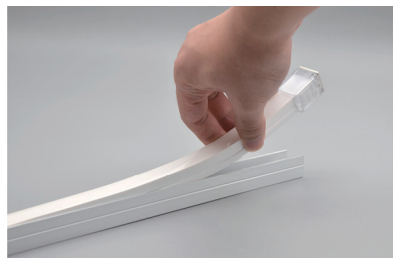
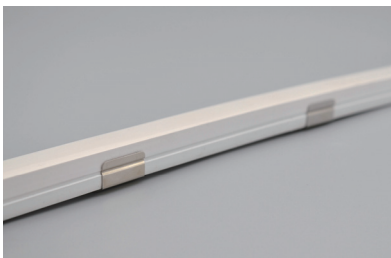
Stainless Steel Mounting clips
20.2x16.8x12.5mm(L x W x H)



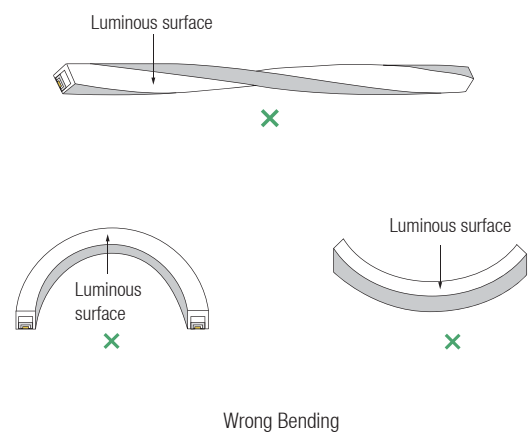
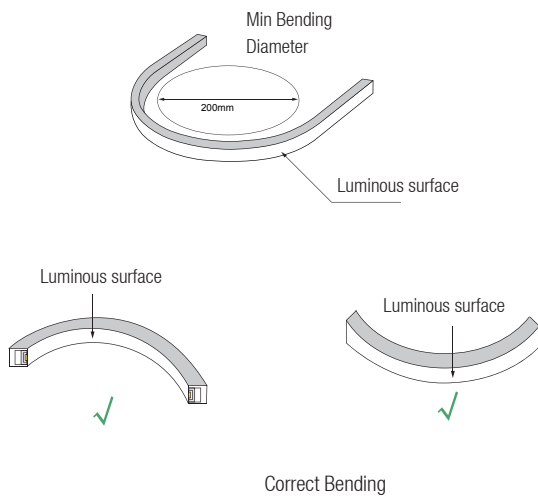
Aluminium Profile
1000x19.2x17.8mm(L x W x H)



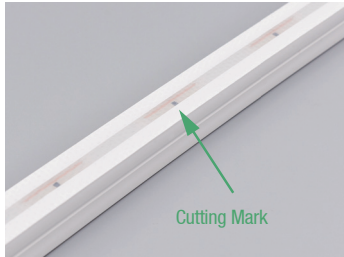
Suspension Installation



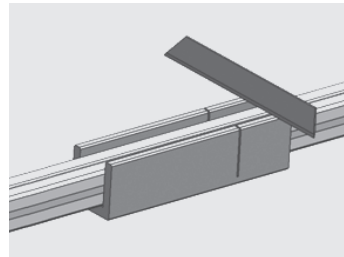
Bending Diagram



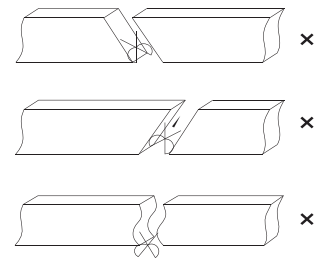
End Cap's Fast Installation Process



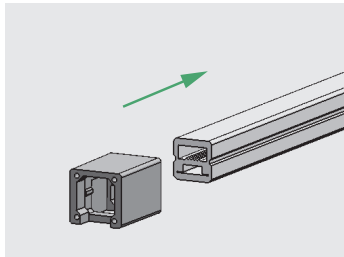
Remark: The bottom of the led strip has transparent window, the black marker is the cutting position



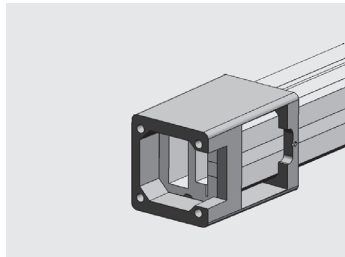
Use a cutting jig, vertical cutting precisely in the exact cutting position of led strip.



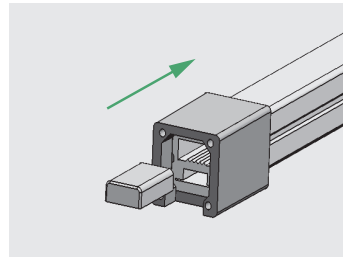
Please don't be feel free to cut and cut into an oblique angle or cambered section.



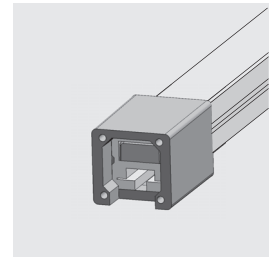
Insert the transparent PC shell into the led strip, insert in to the limit.



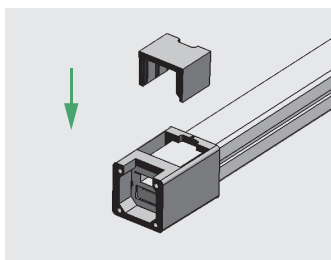
Its window is at the bottom of the led strips for all the front cable entry, side cable entry and bottom cable entry



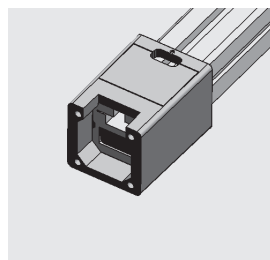
Stuff the plug into the holes corresponding to the led strip



Effect diagram of the finished assembly

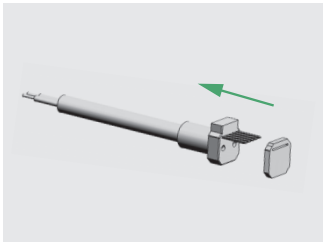


Insert the stopper into the PC shell

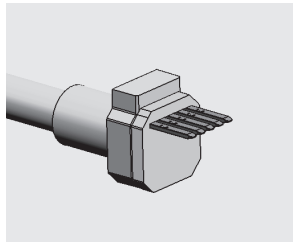


Effect diagram of the stopper assembly completed

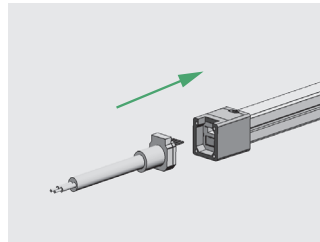
End Cap's Fast Installation Process



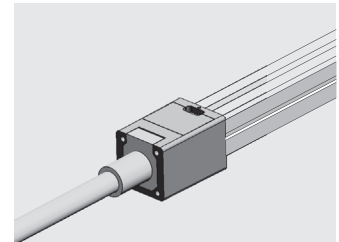
Put the waterproof washer into the plug



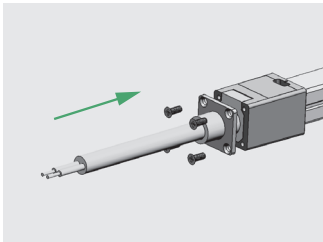
Effect diagram of the waterproof washer assembly completed



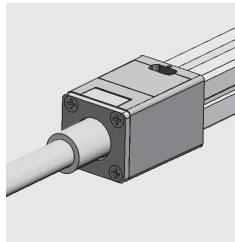
Insert the plug with the waterproof washer into the led strip, and the Pin insert between FPC and transparent PET.



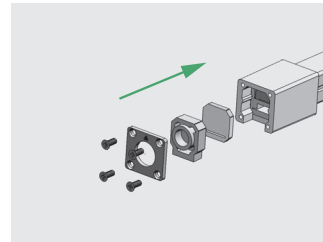
Effect diagram of the plug finished assembly completed



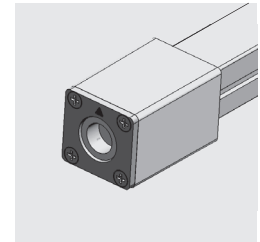
Fix the hardware on the PC shell with 4pcs screws, close to the PC shell, completed assembly



Effect diagram of the metal plate assembly completed

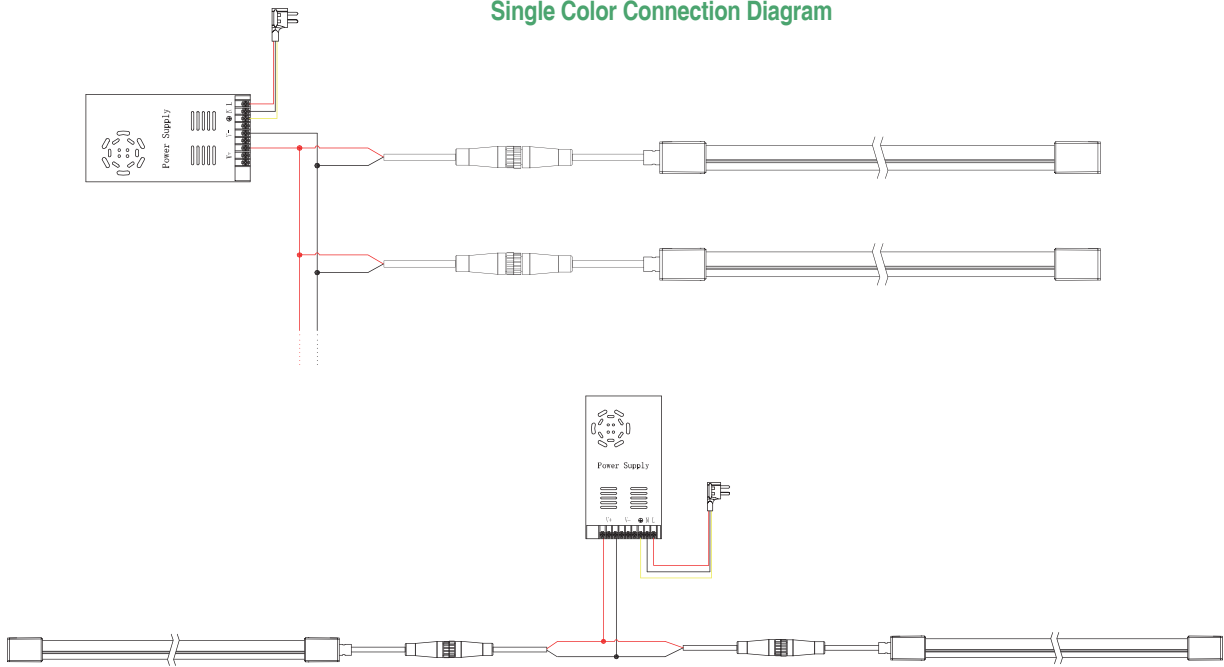


End cap's installation diagram

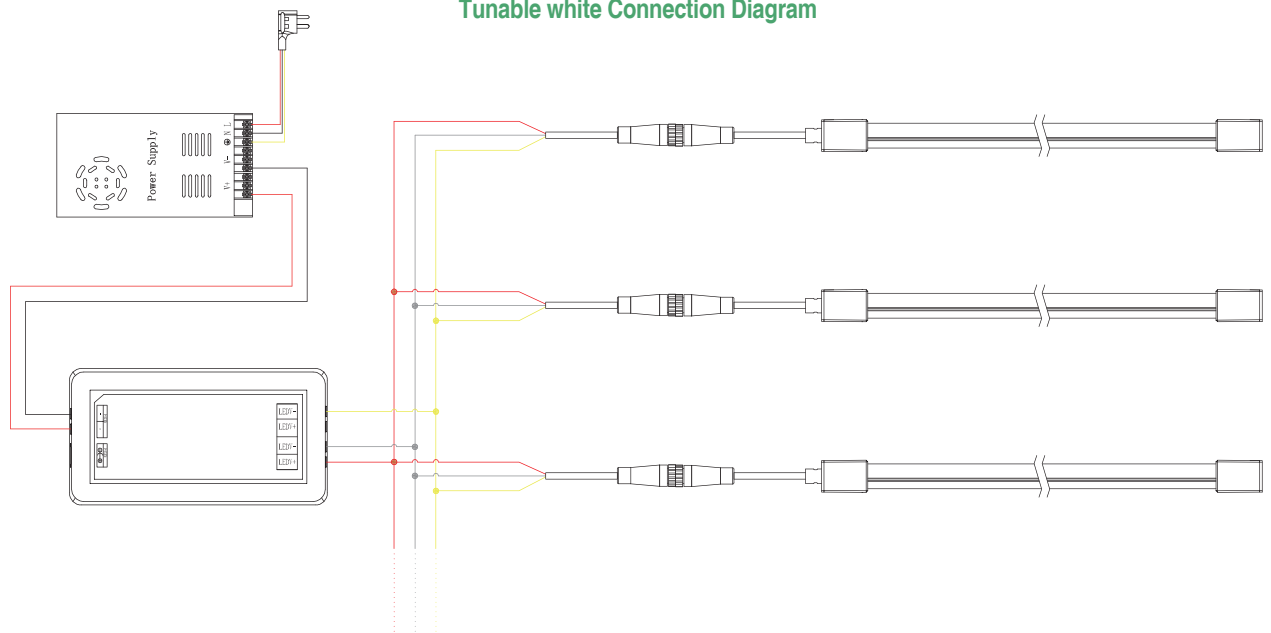


Effect diagram of the metal plate assembly completed

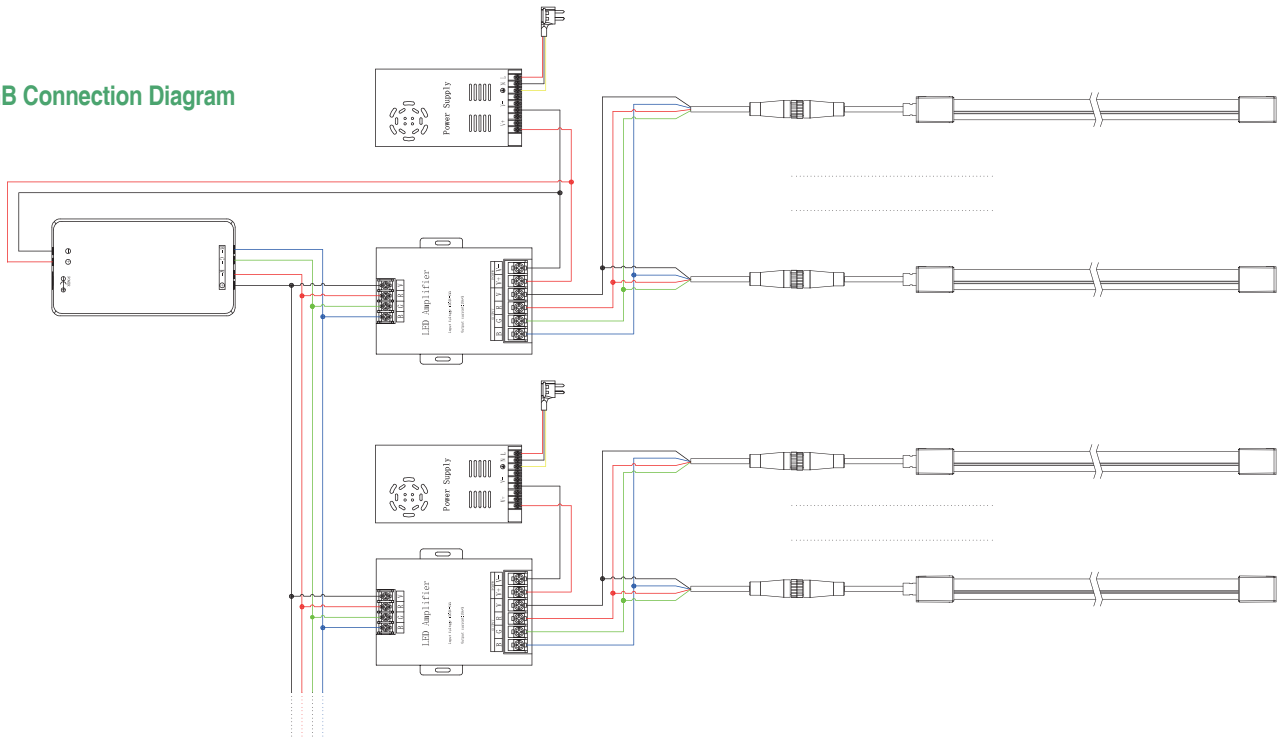
Single Color Connection Diagram



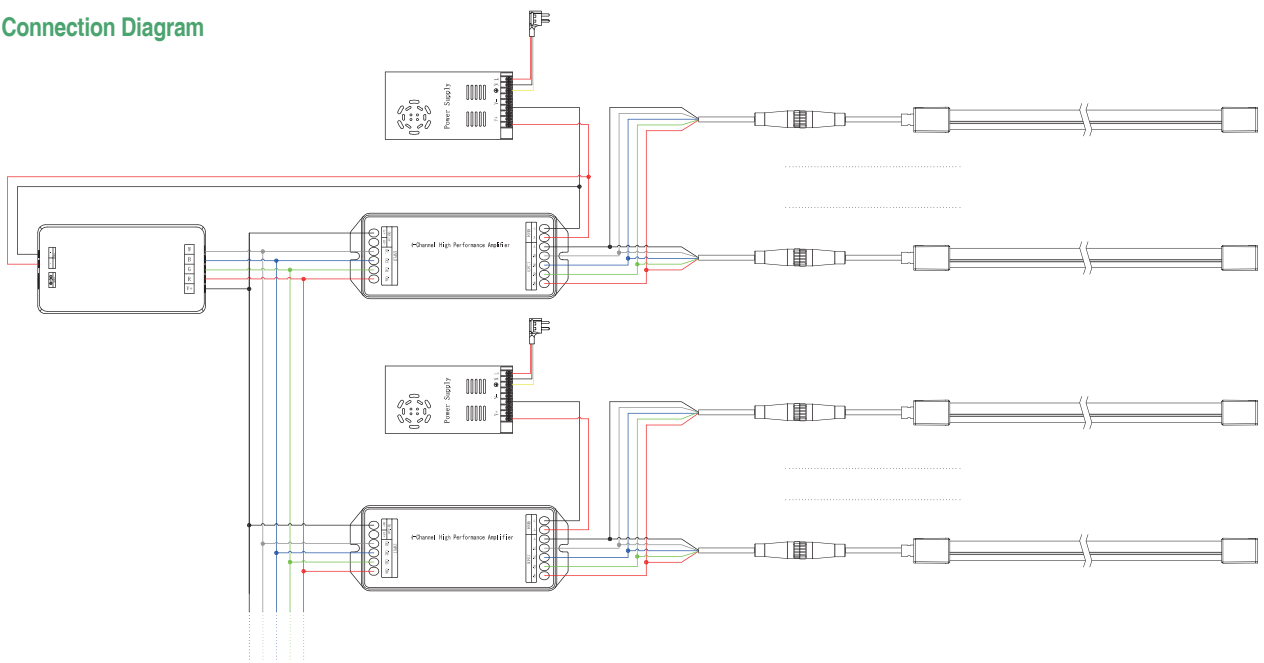
Tunable white Connection Diagram



RGB Connection Diagram



RGBW Connection Diagram



TYRIA LIGHTING

**Specialized
LED strip
Manufacturer**

TYRIA LIGHTING TECHNOLOGY CO., LIMITED



Mingjinhai Industrial Park, Tangtou Road, Shixin Community, Shiyan Town, Baoan District
Shenzhen, Guangdong, China



OUR EMAIL
info@tyrialight.com



OUR PHONE
Tel: 0755-36931652



OUR WEBSITE
Web: www.tyrialight.com