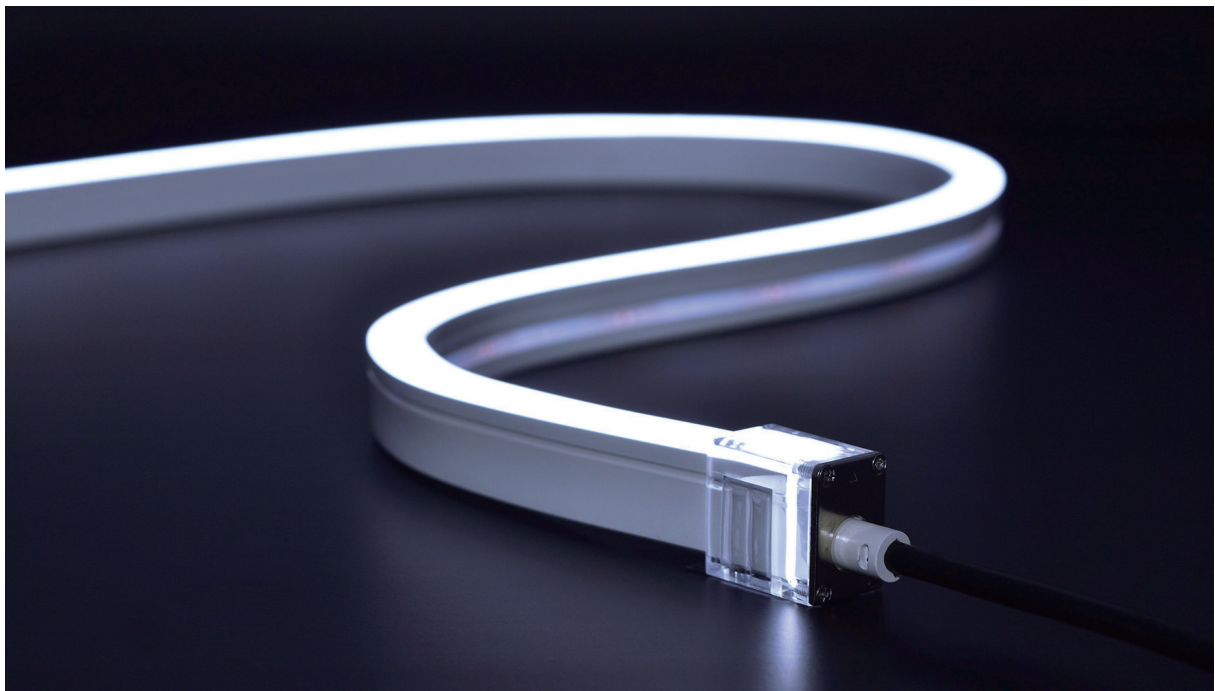
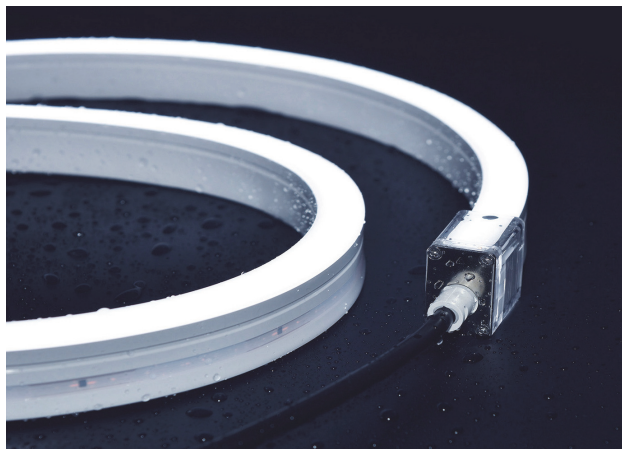


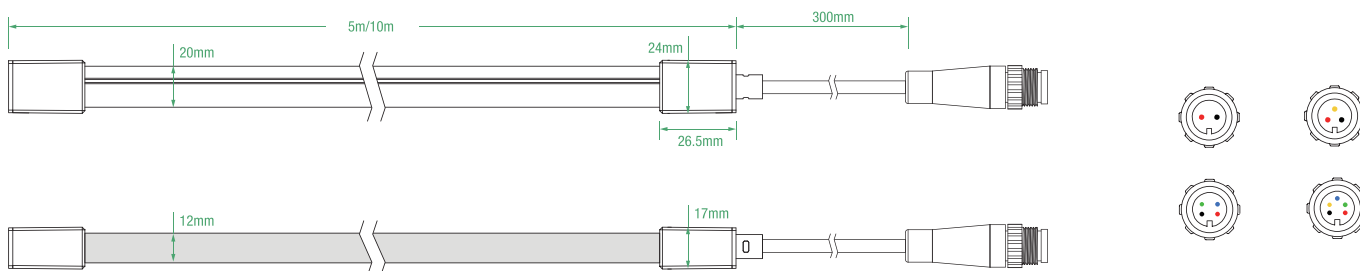
SILICONE LED NEON LIGHT



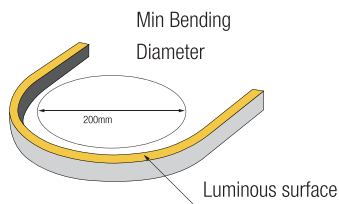
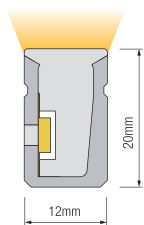


Silicone Ledline Flex Side1220 IP67, DC24V, has bending direction vertically and Front / Side / Bottom Cable Entry. with radius of 100mm (5.9") and across section size: 12mm*20mm/0.47''*0.79''(W*H). It is IP67 protection, never yellow, UV resistant, saltwater resistant and high temperature resistant via opal silicone coating. Uniform luminance and dot free will bring the most excellent performance for indoor & outdoor application. The product has constant voltage and constant current version. Constant current version can connect 27 meters in series with one power supply and don't have voltage drop, and can save the installation cost better. Unique end cap design, can install quickly and easily to meet the different length's request, No welding and dealing with waterproof.

Dimension structure



Across section size's picture



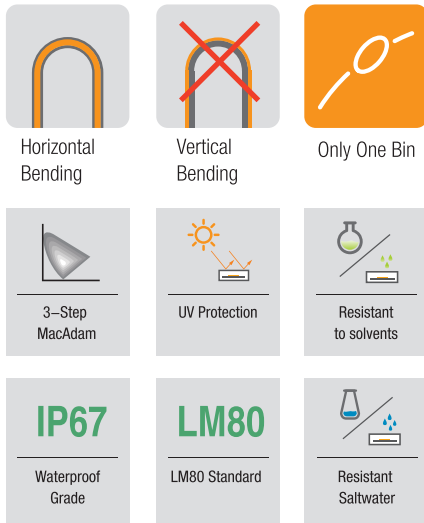
Electrical Parameter

Voltage	DC24V
LED PIN Temperature	Max. 65 °C
Working Temperature	-25 °C ~ 60 °C
Ambient Temperature	Min. -25°C, Max(Table below)
CRI	Ra80/Ra90 Optional

Specification

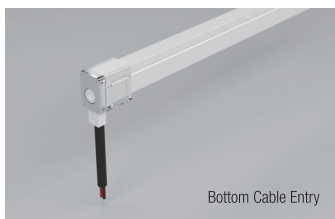
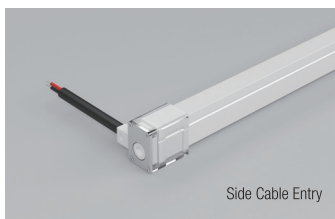
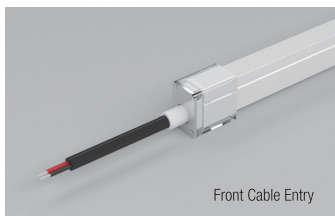
Power	5w/m	10w/m	15w/m
Efficacy@4000K	34.0lm/W	33.6lm/W	31.3lm/W
Max Ambient Temperature	50 °C	45 °C	35 °C

Due to the tolerance of the production and electrical components, output value and electrical power can vary up to 10%



Various Connections

Use three kinds of entry cable, to meet the different installing request



Finished CCT (K)	Unit cut (mm)	CRI	Power (W)	Lumen (LM/m)	Efficacy (LM/w)	Max.run length(m)	CV/CC
● 2100 ±100	50	>90	5	131.7	26.3	27	CC/CV
			10	258.7	25.9	17	
			15	360.9	24.1	14	
● 2400 ±100	50	>90	5	150.4	30.1	27	CC/CV
			10	293	29.3	17	
			15	410.1	27.3	14	
● 2700 ±100	50	>90	5	152.7	30.5	27	CC/CV
			10	303.2	30.3	17	
			15	431.7	28.8	14	
● 3000 ±100	50	>90	5	156.7	31.3	27	CC/CV
			10	307.2	30.7	17	
			15	432.3	28.8	14	
● 3500 +200 -100	50	>90	5	176.9	35.4	27	CC/CV
			10	345.1	34.5	17	
			15	475.4	31.7	14	
● 4000 +300 -200	50	>90	5	170.1	34.0	27	CC/CV
			10	335.6	33.6	17	
			15	470.1	31.3	14	
● 5000 +300 -200	50	>90	5	170	34.0	27	CC/CV
			10	329.4	32.9	17	
			15	461.8	30.8	14	
● 6000 +300 -100	50	>90	5	168.2	33.6	27	CC/CV
			10	328.3	32.8	17	
			15	465.1	31.0	14	
● TW	50	>90	2.5	80.2	32.1	5	CV
			2.5	85.6	34.2	5	
			5	167.4	33.5	5	
● TW	50	>90	5	171.3	34.3	5	CV
			5	186	37.2	5	
			10	353.5	35.4	5	
● TW	50	>90	7.5	229	30.5	5	CV
			7.5	244.3	32.6	5	
			15	476.3	31.8	5	
● R	62.5	--	5	73.8	14.8	35	CC/CV
			10	155.4	15.5	23	
			15	204.7	13.6	18	
● G	62.5	--	5	198.2	39.6	27	CC/CV
			10	372.6	37.3	17	
			15	473.2	31.5	14	
● B	62.5	--	5	35.2	7.0	27	CC/CV
			10	69.8	7.0	17	
			15	93.3	6.2	14	
● Amber	62.5	--	5	15.5	3.1	35	CC/CV
			10	30.4	3.0	23	
			15	40.8	2.7	18	
● Pink	62.5	--	5	74.6	14.9	27	CC/CV
			10	148.2	14.8	17	
			15	199	13.3	14	

- TW: Tunable white, CRI80
- Max series length refers to single side feed
- The above color temperature is the finished-product color temperature.
- The given data are typical values due to the tolerance of the production and electrical components, output value and electrical power can vary up to 10%
- Please don't walk on it without protection.

Power (W)	Finished CCT (K)	Lumen (LM/m)	Efficacy (LM/w)	Unit cut (mm)	Max.run length(m)	CV/CC
5	R	26.5	15.6	62.5	5	CV
	G	75.3	44.3			
	B	15.6	9.2			
	RGB	86.1	17.2			
10	R	35.8	10.8	62.5	5	CV
	G	107.2	32.5			
	B	22.1	6.7			
	RGB	160.2	16.0			
15	R	50	10.0	62.5	5	CV
	G	120.8	24.2			
	B	25	5.0			
	RGB	200.3	13.4			
5	R	18	14.4	62.5	5	CV
	G	75	60.0			
	B	18	14.4			
	W (5000-5600K)	74	59.2			
	RGBW	190	38.0			
10	R	32	12.8	62.5	5	CV
	G	143	57.2			
	B	34	13.6			
	W (5000-5600K)	158	63.2			
	RGBW	366	36.6			
15	R	53	14.1	62.5	5	CV
	G	166	44.3			
	B	45	12.0			
	W (5000-5600K)	210	56.0			
	RGBW	496	33.1			
5	R	18	15.2	62.5	5	CV
	G	75	60.8			
	B	18	15.2			
	W (3400-4000K)	74	62.4			
	RGBW	190	38.6			
10	R	32	13.2	62.5	5	CV
	G	143	56.0			
	B	34	14.0			
	W (3400-4000K)	158	67.6			
	RGBW	366	37.4			
15	R	53	14.7	62.5	5	CV
	G	166	45.6			
	B	45	11.7			
	W (3400-4000K)	210	59.5			
	RGBW	496	33.6			

- TW: Tunable white, CRI80
- Max series length refers to single side feed
- The above color temperature is the finished-product color temperature.
- The given data are typical values due to the tolerance of the production and electrical components, output value and electrical power can vary up to 10%
- Please don't walk on it without protection.

Power (W)	Finished CCT (K)	Lumen (LM/m)	Efficacy (LM/w)	Unit cut (mm)	Max.run length(m)	CV/CC
5	 R	18	14.4	62.5	5	CV
	 G	78	62.4			
	 B	19	15.2			
	 W (2400-3000K)	72	57.6			
	 RGBW	188	37.6			
10	 R	34	13.6	62.5	5	CV
	 G	138	55.2			
	 B	35	14.0			
	 W (2400-3000K)	158	63.2			
	 RGBW	358	35.8			
15	 R	55	14.7	62.5	5	CV
	 G	172	45.9			
	 B	49	13.1			
	 W (2400-3000K)	207	55.2			
	 RGBW	500	33.3			
5	 R	19	15.2	62.5	5	CV
	 G	77	61.6			
	 B	18	14.4			
	 W (2400-3000K)	69	55.2			
	 RGBW	182	36.4			
10	 R	32	12.8	62.5	5	CV
	 G	135	54.0			
	 B	31	12.4			
	 W (2400-3000K)	145	58.0			
	 RGBW	337	33.7			
15	 R	55	14.7	62.5	5	CV
	 G	157	41.9			
	 B	42	11.2			
	 W (2400-3000K)	191	50.9			
	 RGBW	466	31.1			

Mounting Way



Stainless Steel Mounting clips
20x12.7x18.7mm(L x W x H)



Aluminium Profile
1000x14.4x21.4mm(L x W x H)

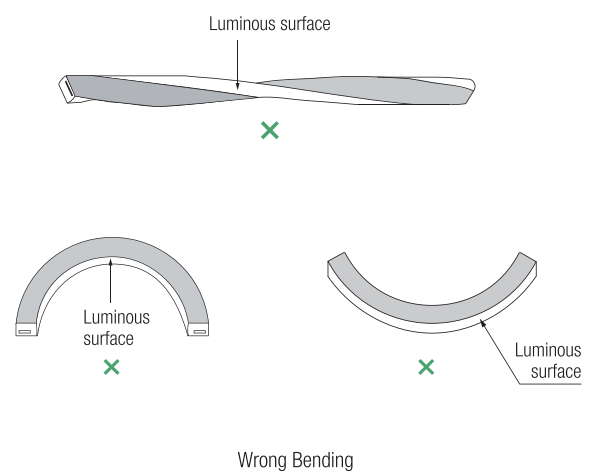
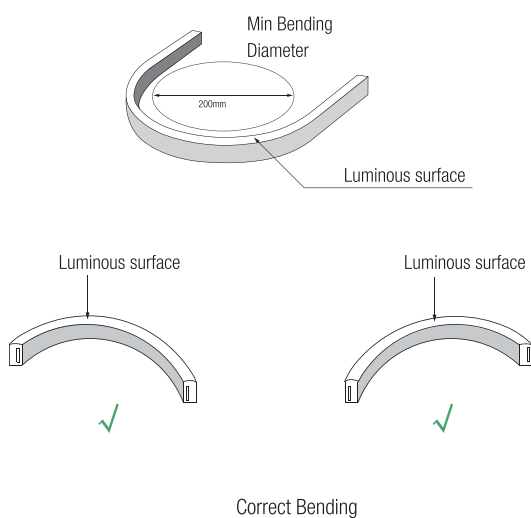


Suspension Installation

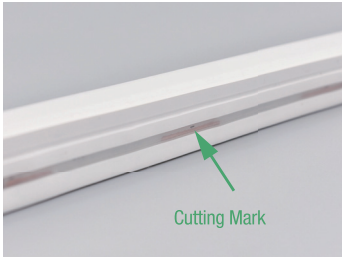


Curved Metal Profile
1000x26.4x18mm(L x W x H)

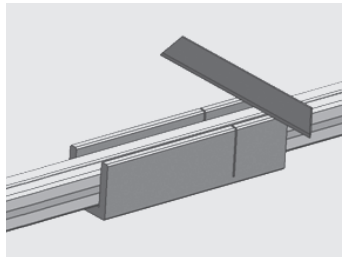
Bending Diagram



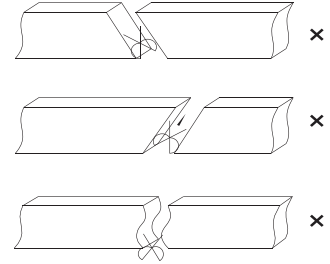
End Cap's Fast Installation Process



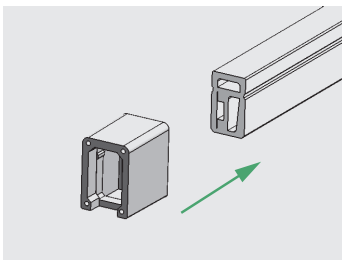
Remark: The bottom of the led strip has transparent window, the black marker is the cutting position



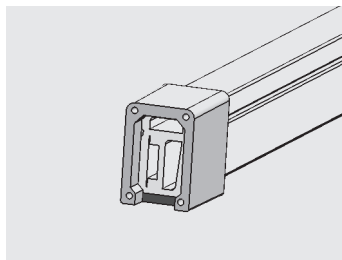
Use a cutting jig, vertical cutting precisely in the exact cutting position of led strip.



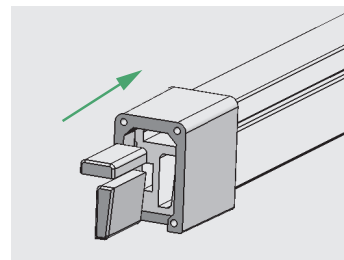
Please don't be feel free to cut and cut into an oblique angle or cambered section.



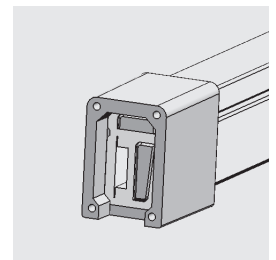
Insert the transparent PC shell into the led strip, insert in to the limit.



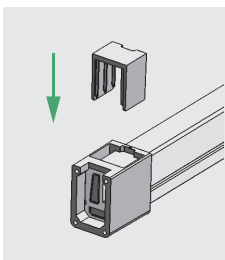
Its window is at the bottom of the led strips for all the front cable entry, side cable entry and bottom cable entry



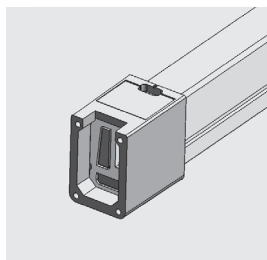
Stuff the plug into the holes corresponding to the led strip



Effect diagram of the finished assembly

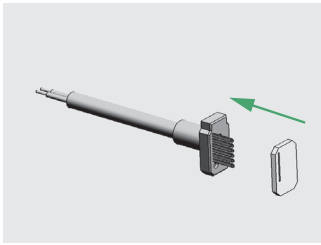


Insert the stopper into the PC shell

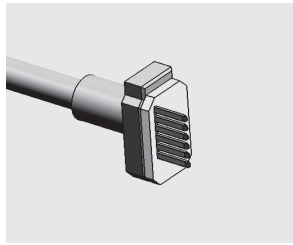


Effect diagram of the stopper assembly completed

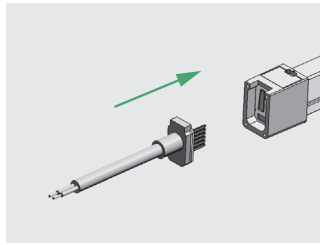
End Cap's Fast Installation Process



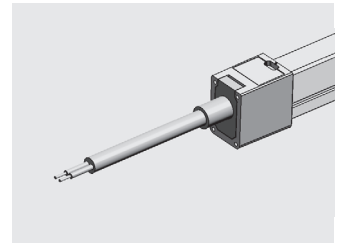
Put the waterproof washer into the plug



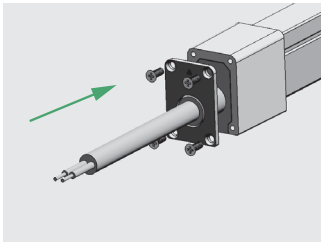
Effect diagram of the waterproof washer assembly completed



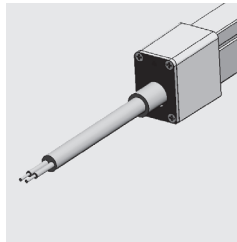
Insert the plug with the waterproof washer into the led strip, and the Pin insert between FPC and transparent PET.



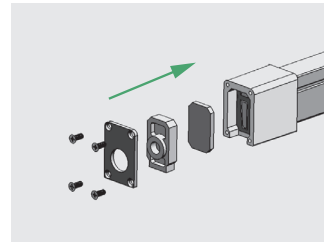
Effect diagram of the plug finished assembly assembly completed



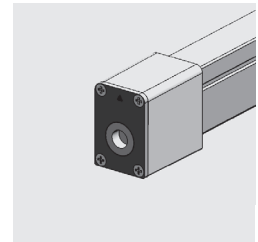
Fix the hardware on the PC shell with 4pcs screws, close to the PC shell, completed assembly



Effect diagram of the metal plate assembly completed

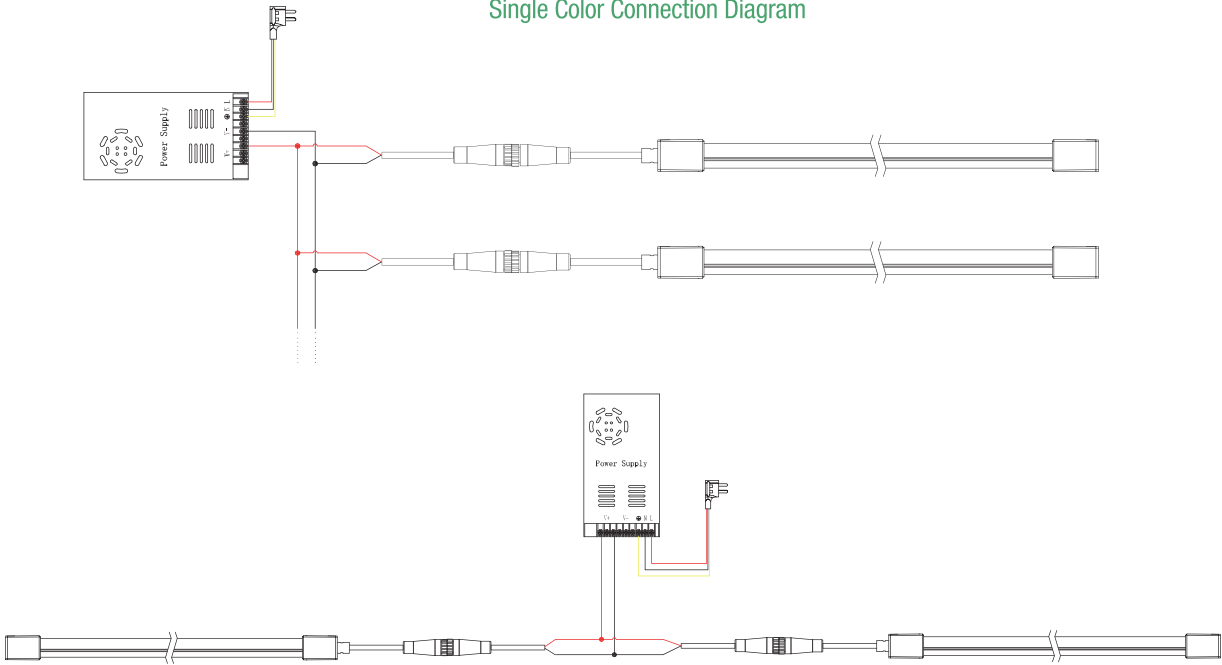


End cap's installation diagram

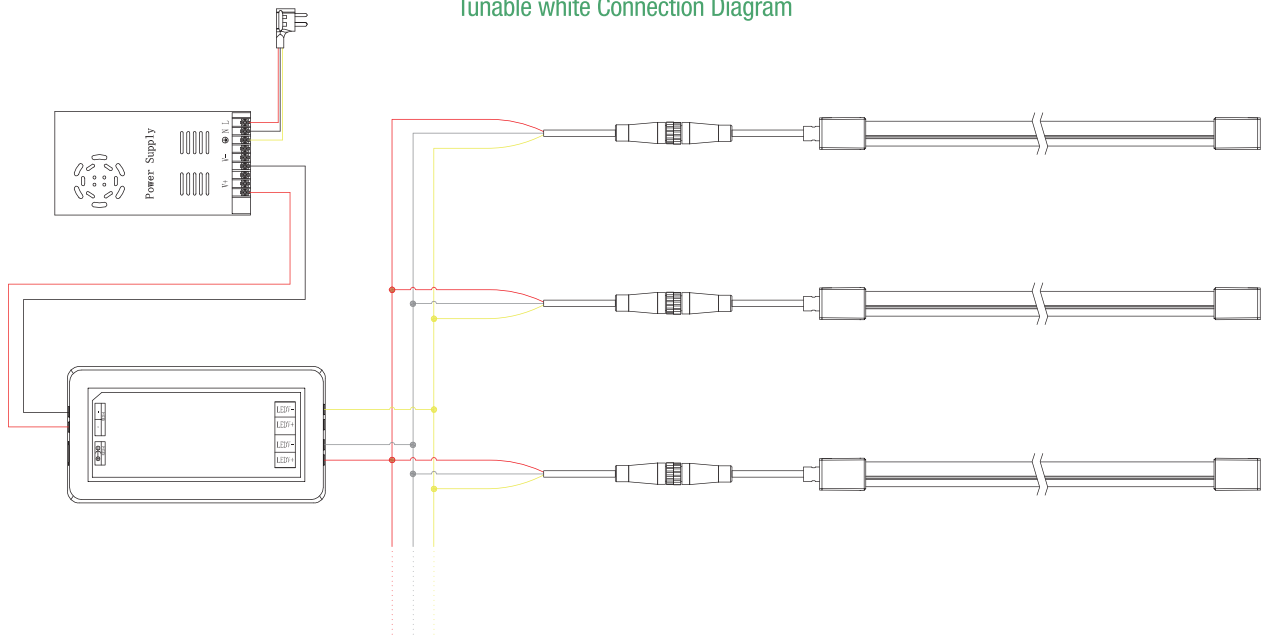


Effect diagram of the metal plate assembly completed

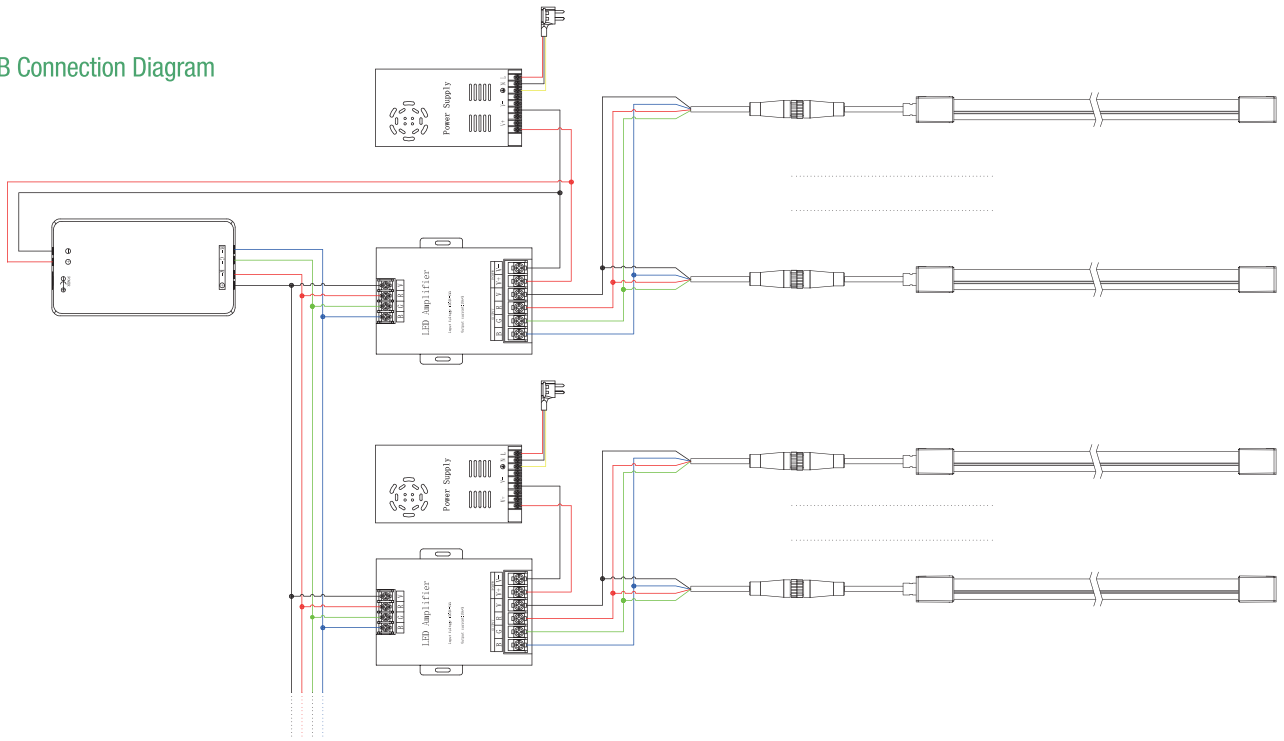
Single Color Connection Diagram



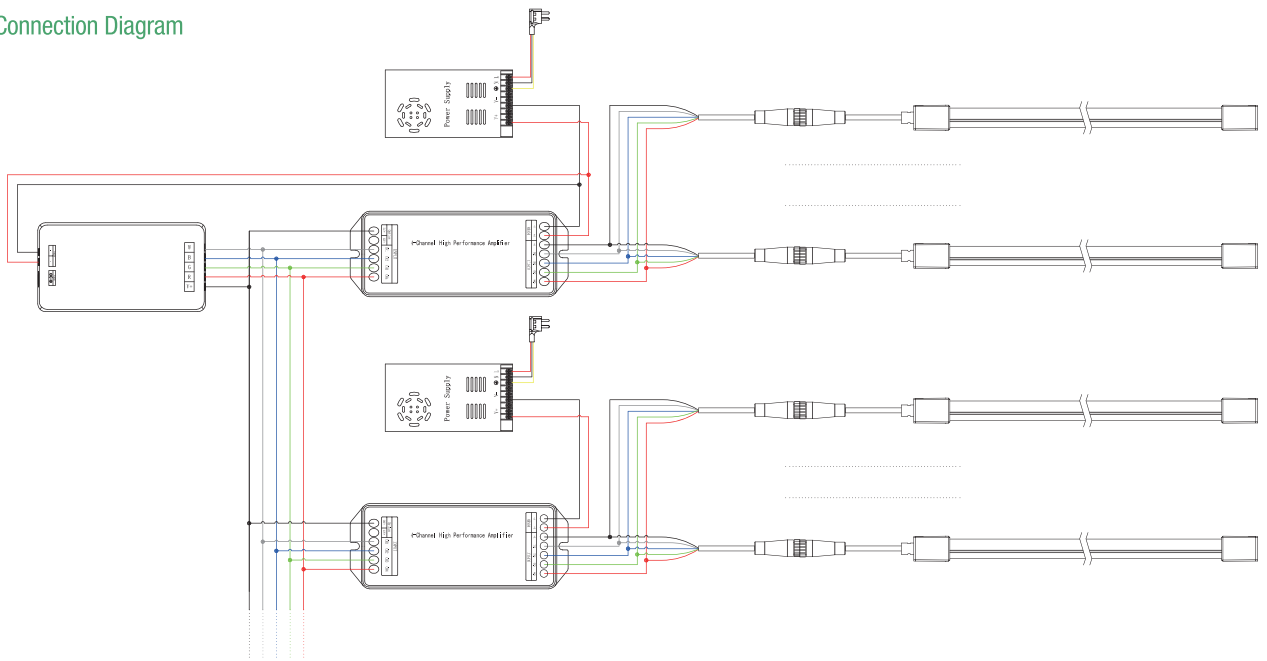
Tunable white Connection Diagram



RGB Connection Diagram



RGBW Connection Diagram



TYRIA LIGHTING

**Specialized
LED strip
Manufacturer**

TYRIA LIGHTING TECHNOLOGY CO., LIMITED



Mingjinhai Industrial Park, Tangtou Road, Shixin Community, Shiyan Town, Baoan District
Shenzhen, Guangdong, China



OUR EMAIL
info@tyrialight.com



OUR PHONE
Tel: 0755-36931652



OUR WEBSITE
Web: www.tyrialight.com