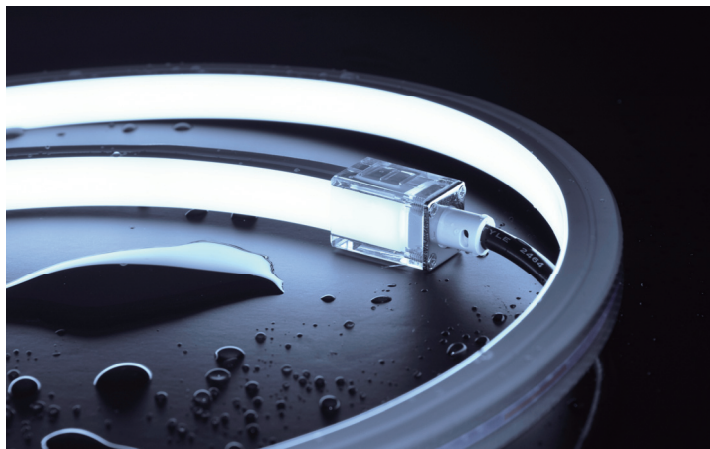


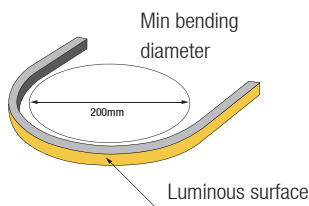
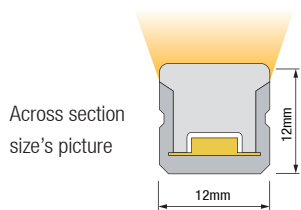
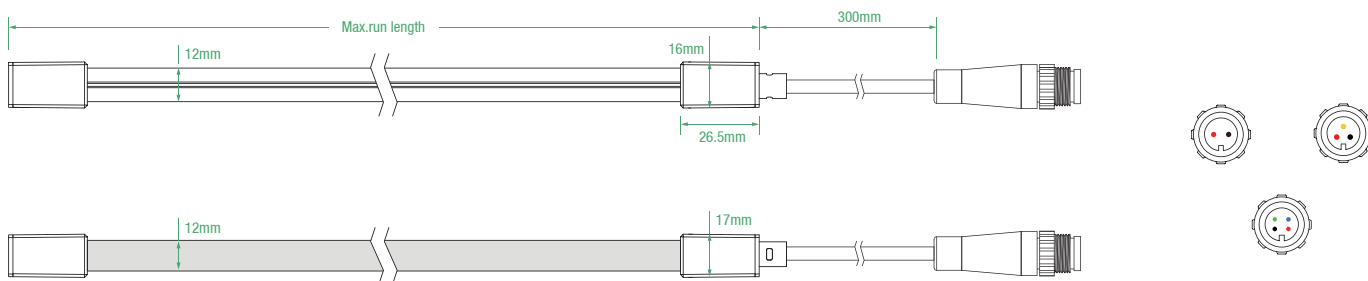
# SILICONE LED NEON LIGHT





Silicone Ledline Flex Side1212 IP67, DC24V, has bending direction vertically and Front / Side / Bottom Cable Entry.with radius of 100mm (3.94" ) and across section size:12mm\*12mm/0.47"\*0.47"(W\*H). It is IP67 protection, never yellow, UV resistant, saltwater resistant and high temperature resistant via opal silicone coating.Uniform luminance and dot free will bring the most excellent performance for indoor& outdoor application.The product has constant voltage and constant current version. Constant current version can connect 19meters in series with one power supply and don' t have voltage drop ,and can save the installation cost better.Unique end cap design , can install quickly and easily to meet the different length' s request, No welding and dealing with waterproof.

## Dimension structure



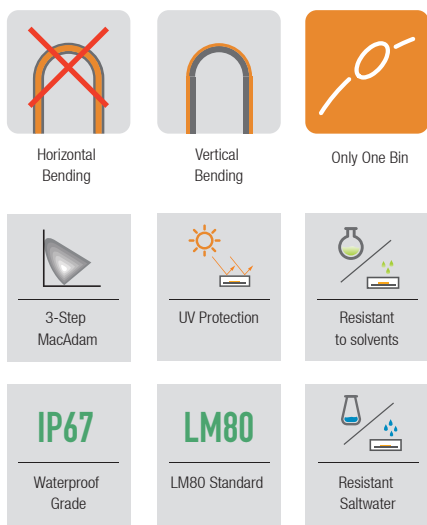
## Electrical Parameter

Voltage	DC24V
LED PIN temperature	Max. 65 °C
Working temperature	-25 °C ~ 60 °C
Ambient temperature	Min. -25°C, Max (Table below)
CRI	Ra80/Ra90 Optional

## Specification

Power	5w/m	10w/m
Efficacy(lm/w)@4000K	69.4lm/w	67.7lm/w
Max ambient temperature	50 °C	45 °C

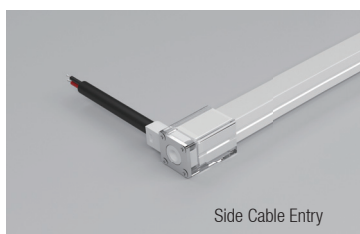
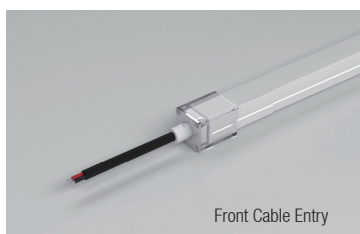
Due to the tolerance of the production and electrical components, output value and electrical power can vary up to 10%



Finished CCT (K)	Unit cut (mm)	CRI	Power (W)	Lumen (LM/m)	Efficacy (LM/w)	Max.run length(m)	CV/CC
● 2100 ±100	50	>90	5	290.8	58.2	19	CC/CV
			10	559.8	56.0	13	
● 2400 ±100	50	>90	5	289.6	57.9	19	CC/CV
			10	562.4	56.2	13	
● 2700 ±100	50	>90	5	349.5	69.9	19	CC/CV
			10	668.3	66.8	13	
● 3000 ±100	50	>90	5	329.7	65.9	19	CC/CV
			10	638.8	63.9	13	
● 3500 <sup>+200</sup> <sub>-100</sub>	50	>90	5	354.1	70.8	19	CC/CV
			10	661.7	66.2	13	
● 4000 <sup>+300</sup> <sub>-200</sub>	50	>90	5	347.1	69.4	19	CC/CV
			10	677.4	67.7	13	
● 5000 <sup>+300</sup> <sub>-200</sub>	50	>90	5	346.7	69.3	19	CC/CV
			10	681.9	68.2	13	
● 6000 <sup>+300</sup> <sub>-100</sub>	50	>90	5	336.2	67.2	19	CC/CV
			10	661.8	66.2	13	
● TW	50	>90	2.5	151.2	60.5	5	CV
			2.5	161.2	64.5	5	
			5	316	63.2	5	
			5	314.5	62.9	5	
			5	336.6	67.3	5	
● R	50	--	5	132	26.4	25	CC/CV
			10	276.7	27.7	17	
● G	50	--	5	374	74.8	19	CC/CV
			10	703	70.3	13	
● B	50	--	5	70	14.0	19	CC/CV
			10	129	12.9	13	
● Amber	50	--	5	27.9	5.6	25	CC/CV
			10	50.7	5.1	17	
● Pink	50	--	5	143	28.6	19	CC/CV
			10	278	27.8	13	
● RGB-R	62.5	--	1.7	34.2	20.1	5	CV
			3.3	69.1	20.9	5	
● RGB-G	62.5	--	1.7	111	65.3	5	CV
			3.3	214.5	65.0	5	
● RGB-B	62.5	--	1.7	20	11.8	5	CV
			3.3	40.2	12.2	5	
● RGB	62.5	--	5	174	34.8	5	CV
			10	288	28.8	5	

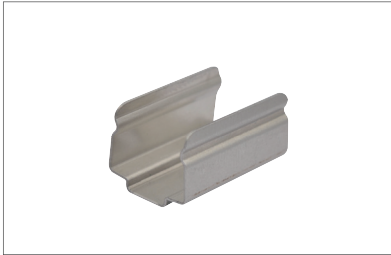
## Various Connections

Use three kinds of entry cable, to meet the different installing request



1. TW: Tunable white, CRI80
2. Max series length refers to single side feed
3. The above color temperature is the finished-product color temperature.
4. The given data are typical values due to the tolerance of the production and electrical components, output value and electrical power can vary up to 10%
5. Please don't walk on it without protection.

## Mounting Way



Stainless Steel Mounting clips  
20.2x16.8x12.5mm(L x W x H)



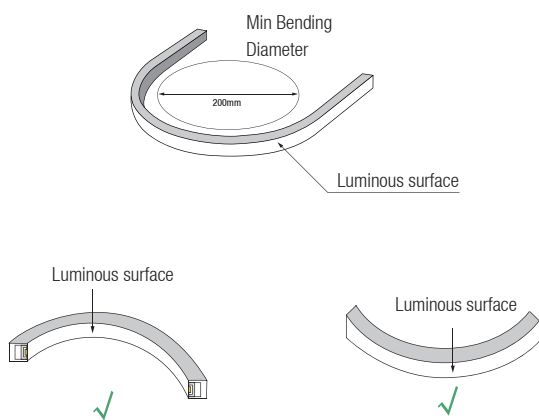
Aluminium Profile  
1000x19.2x17.8mm(L x W x H)



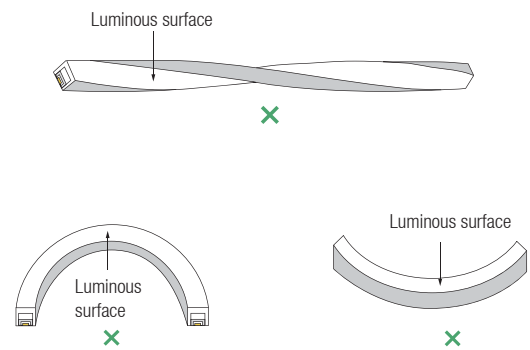
Suspension Installation



## Bending Diagram

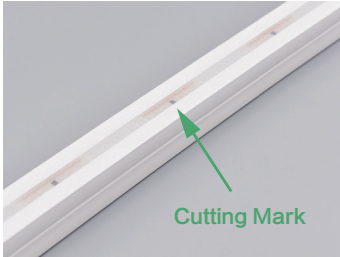


Correct Bending

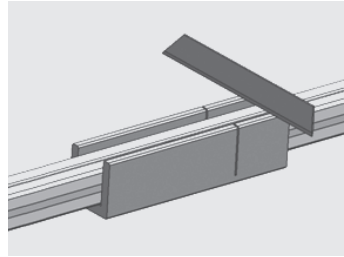


Wrong Bending

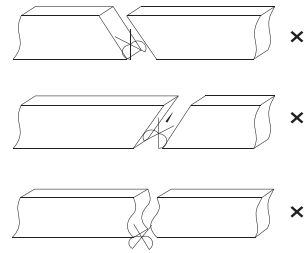
## End Cap's Fast Installation Process



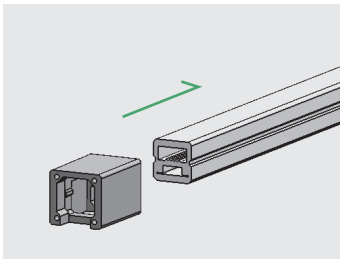
Remark: The bottom of the led strip has transparent window, the black marker is the cutting position



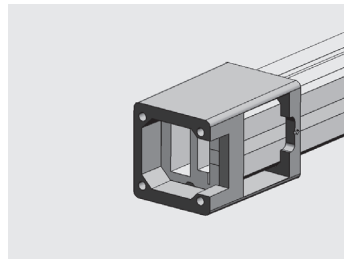
Use a cutting jig, vertical cutting precisely in the exact cutting position of led strip.



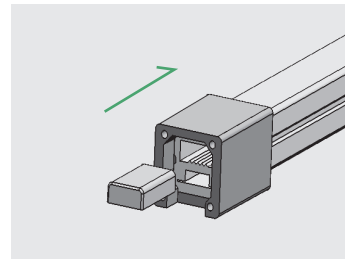
Please don't be feel free to cut and cut into an oblique angle or cambered section.



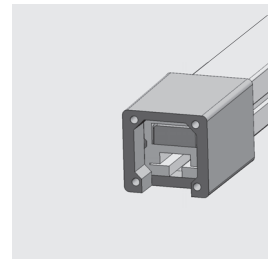
Insert the transparent PC shell into the led strip, insert in to the limit.



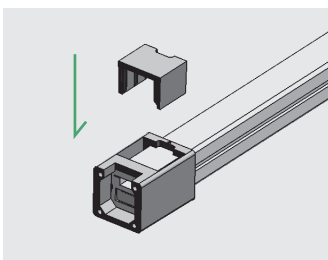
Its window is at the bottom of the led strips for all the front cable entry, side cable entry and bottom cable entry



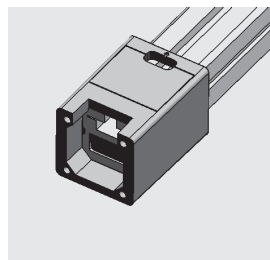
Stuff the plug into the holes corresponding to the led strip



Effect diagram of the finished assembly

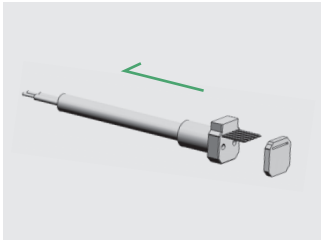


Insert the stopper into the PC shell

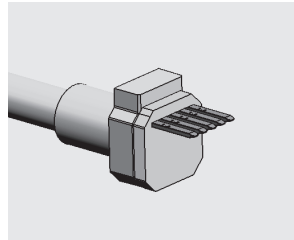


Effect diagram of the stopper assembly completed

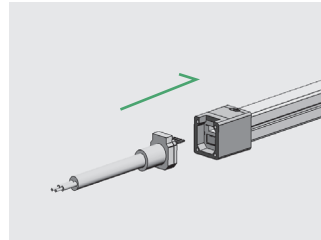
## End Cap's Fast Installation Process



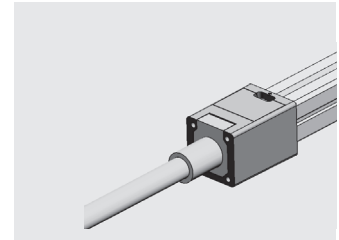
Put the waterproof washer into the plug



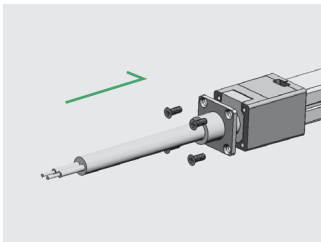
Effect diagram of the waterproof washer assembly completed



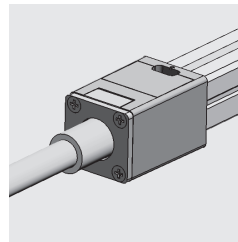
Insert the plug with the waterproof washer into the led strip, and the Pin insert between FPC and transparent PET.



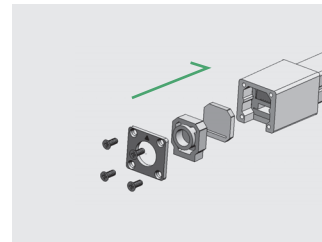
Effect diagram of the plug finished assembly assembly completed



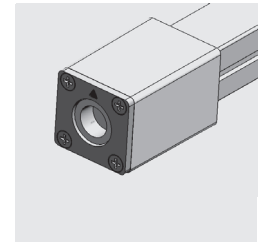
Fix the hardware on the PC shell with 4pcs screws, close to the PC shell, completed assembly



Effect diagram of the metal plate assembly completed

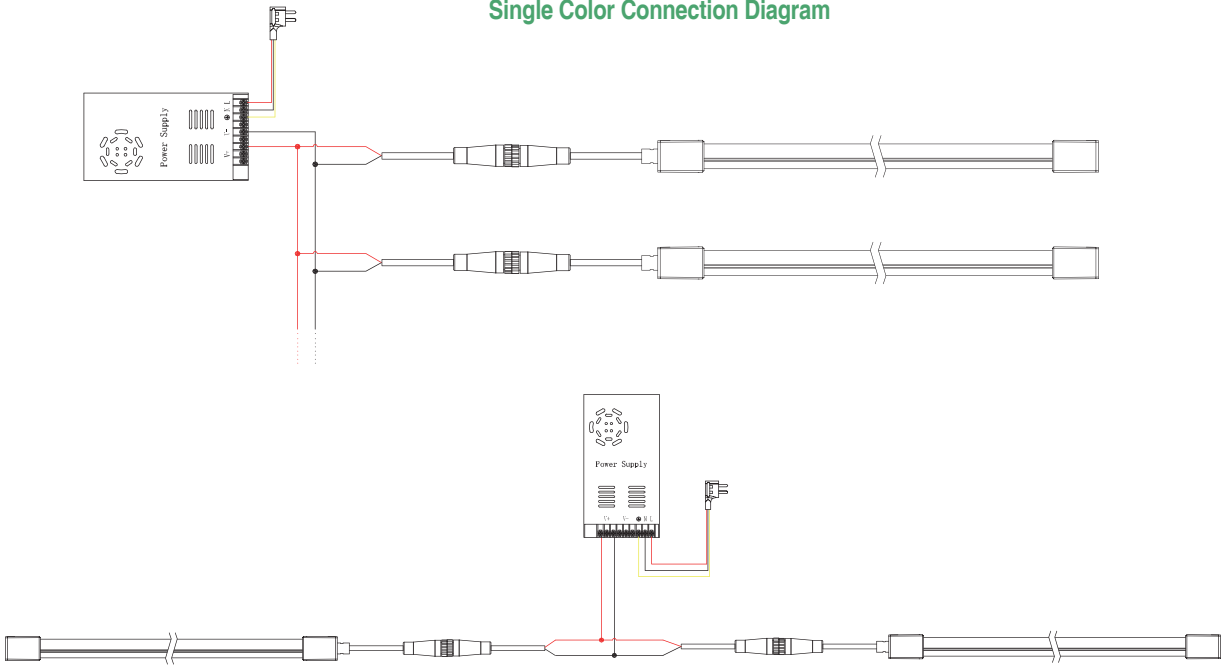


End cap's installation diagram

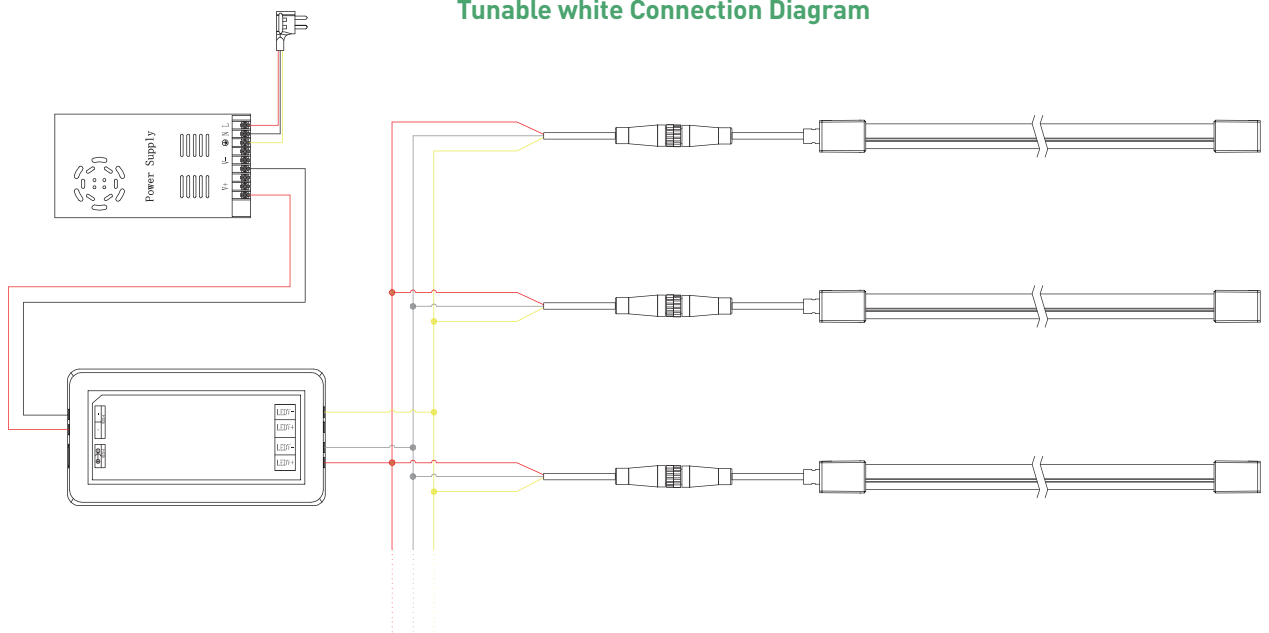


Effect diagram of the metal plate assembly completed

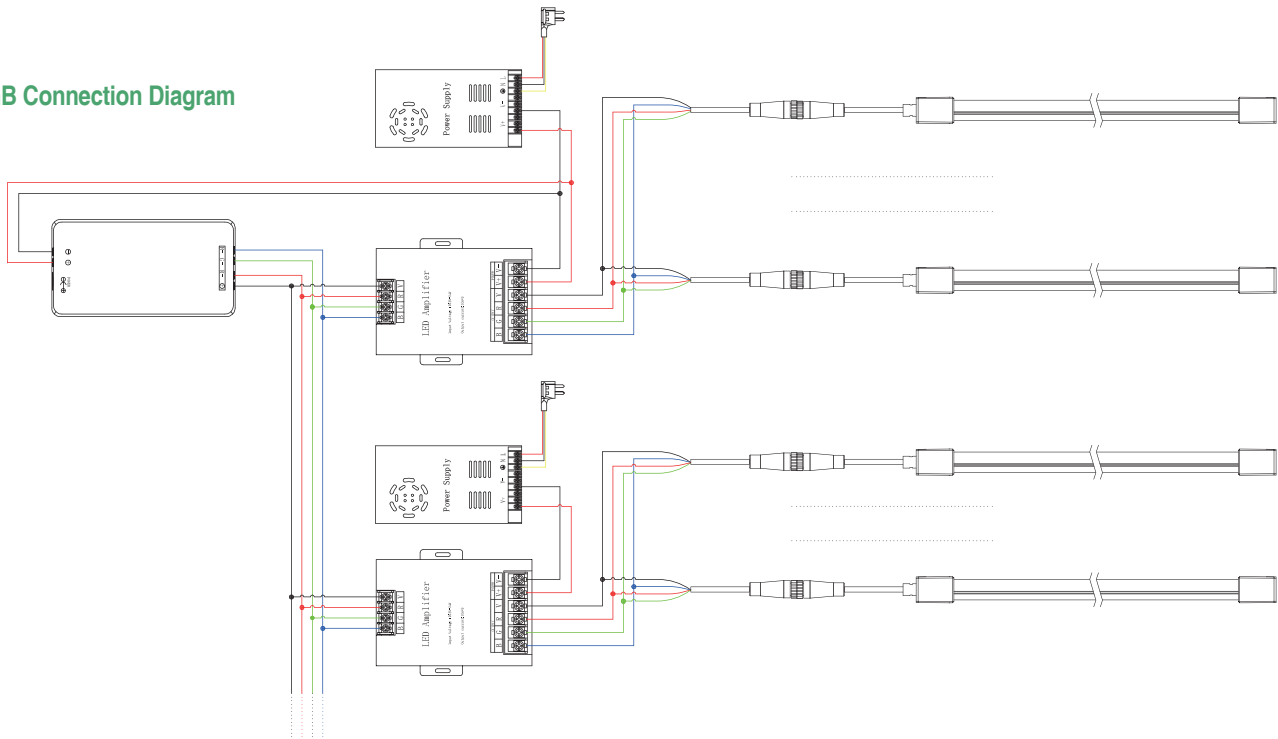
### Single Color Connection Diagram



### Tunable white Connection Diagram



RGB Connection Diagram





TYRIA LIGHTING

**Specialized  
LED strip  
Manufacturer**

## TYRIA LIGHTING TECHNOLOGY CO., LIMITED



Mingjinhai Industrial Park, Tangtou Road, Shixin Community, Shiyan Town, Baoan District  
Shenzhen, Guangdong, China



**OUR EMAIL**  
info@tyrialight.com



**OUR PHONE**  
Tel: 0755-36931652



**OUR WEBSITE**  
Web: www.tyrialight.com